

Car only

DSP 6 in 8 out pure audio processor

User manual XT AUDIO PROCESSOR

Please read this manual carefully in order to maximize the excellent performance and functions of the audio processor. After use, please keep this book for future reference.

Do not let the tail wire get caught in surrounding objects

It is very dangerous for the tail wire to obstruct or hang over the steering wheel, gear lever, brake pedal, etc.

Do not cut the tail

Do not cut the insulation layer of the tail wire to supply power to other equipment, otherwise the rated load of the wire will be exceeded and cause fire or electric shock.

Ask a professional to install

There is no place in the machine where users can repair by themselves, please do not disassemble the machine. If you need repair, please find a professional.

1.Greeting

Thank you very much for your trust,choose a car audio processor, your choice is correct.This product is specially designed for lossless installation of car audio.The operation is fast and simple.The dedicated DSP brings you your own music enjoyment.

Please read this manual to familiarize yourself with various control functions,and hope that the audio processor can bring you many years of listening enjoyment.

If there is a problem installing the sound processor,please contact your authorized dealer.

2.Introduction

DSP special sound processor is a product of car lossless audio modification, exclusive use six-core bit processing 32 DSP chip, Exclusive use of three-core power amplifier chip, The "One Belt Four Roads, Two Belt Two Channels" way to drive the horn, nanosecond processing speed; DRC dynamic music deal with; Built-in 4.2 high-speed Bluetooth, support mobile phones to play lossless music tuning and upload and download Cloud master curve; using DSP computer tuning technology, with a variety of input and output free matching routing function, with 31-segment EQ floating point high-precision tuning system; adjustable sound field delay, realize the space editing function, and customize the good sounds that customers love. And can intelligently repair the signal loss and phase of DVD/CD due to the environment of the vehicle defects such as position deviation, the sound is strong and powerful, and the sound quality is soft and delicate, so that the sound that he sound is truly reproduced.

3.Characteristic

- ✓ 31-band EQ floating point high-precision tuning system.
- ✓ Routing with selection function.
- ✓ High and low pass filters.
- ✓ Adjustable sound field delay, realize delay joint adjustment function, realize sound field space editing.
- ✓ Gain control, phase control.
- ✓ Joint debugging function.
- ✓ Limit function.
- ✓ Built-in 4.2 high-speed Bluetooth, support mobile phones to play lossless music.

4.Announcements the do's and don'ts

Warning

Do not use any functions that will distract you while driving

Any function that affects your attention should only be used after the car is completely stopped. To use these functions, please park the vehicle in a safe area first, otherwise it may cause an accident.

During driving, the volume must be kept at a level where external noise can be heard

It is very dangerous for the volume to be too loud to cause the emergency vehicle warning sound and road warning signal (train intersection) to be unclear, and may cause accidents. In addition, listening to too much volume in the car may also cause hearing loss.

Please use this product on a 12v vehicle voltage

If other voltages are used, it may cause fire, electric shock, or other injuries.

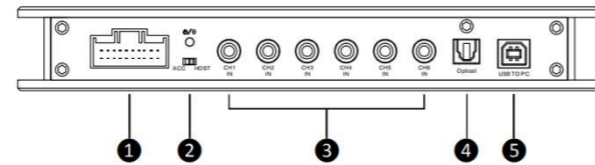
When replacing the fuse, a fuse with a positive safety multiple must be selected

Otherwise it may cause fire or electric shock.

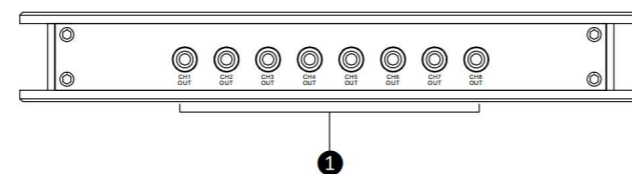
Please make the correct connection.

Incorrect connection may cause fire or damage to the product.

5.Interface and function

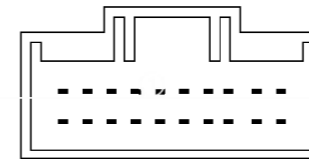


- ① 20PIN signal input tail cable socket.
- ② ACC/ HOST selection switch, choose ACC or high level startup mode; Power/Bluetooth indicator: The red light flashes when the power is connected, Blue light on when connected to Bluetooth audio.
- ③ 6-channel RCA low-level audio input interface.
- ④ Audio optical solder interface.
- ⑤ Connect to USB interface for PC debugging.



- ① 8-channel RCA low-level output interface.

6. Special interface definition



REN IN	REM OUT	FLIN+	FRIN+	RLIN+	RRIN+	BLIN+	BRIN+	NC	NC
Start input	Start output	Front left input	Front right input	Enter left	Enter right	Auxiliary left input	Auxiliary right enter		
BATT	GND	BRIN-	FRIN-	RLIN-	RRIN-	BLIN-	BRIN-	NC	NC
power supply	Power ground	Front left input	Front left input	Enter left	Enter right	Auxiliary left input	Auxiliary right enter		

20 PIN socket

7.Controlling software

1. When the control software is fully used, The resolution of the monitor should be greater than 1280*768, otherwise the interface cannot be fully displayed.

2. Software running interface.



① Main interface

② High and low pass filter:

Type: Butterworth/Bessel/Ningke optional.

Slope: 6dB/12dB/18dB/24dB/30dB/36dB/42dB/48dB optional.

③ 31-band equalizer:

The equalizer has optional parameter equalization and graphic equalization;

The adjustable items for parameter balancing are: frequency, Q value, gain;

The adjustable items of parameter balance are: frequency, Q value, gain;

④ Limiter:

Limiting level: 6dBu~30dBu;

Response time: 0.3ms~100ms;

Release time: Atk*2~Atk*32.

⑤ Channel editing: including volume, phase, etc.

⑥ Edit joint debugging.

⑦ Delay adjustment of sound field positioning

8.Mixing setting interface



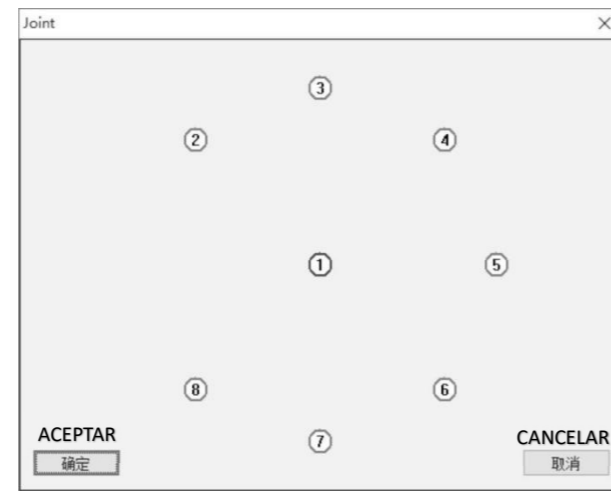
① Click on "Mixed Settings" to enter the routing interface.

② Six-channel audio input signal can be flexibly configured according to the actual use of the corresponding output channel.

③ Click the switch to turn green, you can define that the corresponding output channel has output.

④ Click X to exit the mixing setting interface.

9. Output joint debugging interface

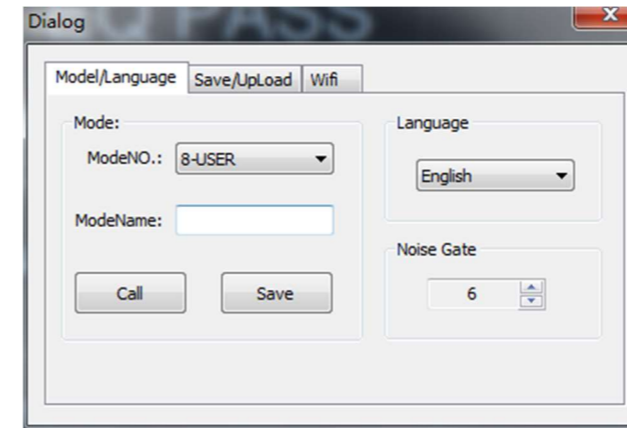


① Click on any channel of output joint adjustment to enter the output joint adjustment interface.

② After clicking on the output channel to be linked, the selected channel has a blue connection connect, click "OK" to enter the joint debugging state.

③ Click "Cancel" or X to exit the output joint debugging interface, at this time, joint debugging is not performed.

10. Mode/language setting interface



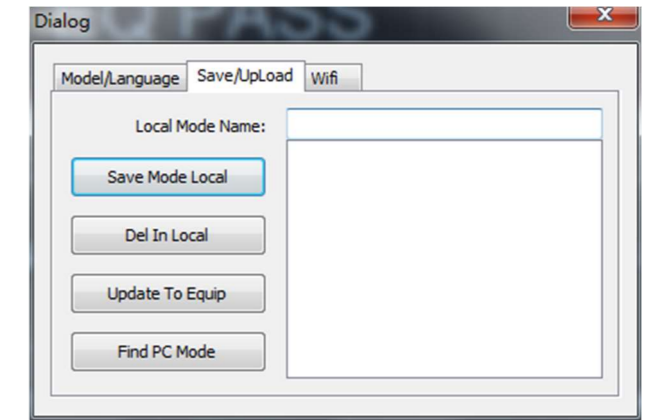
① Calling mode: select the mode to be called in "Mode Number", click The selected mode of "Call Mode" takes effect.

② Save mode: After setting the required parameters, select in "Mode No."The serial number of the mode to be saved, click "Save Mode" parameter to save to In the selected mode.

③ Language: Simplified Chinese/Traditional Chinese/English are optional.

④ Noise gate: 0-20 setting.

11. Save/upload interface

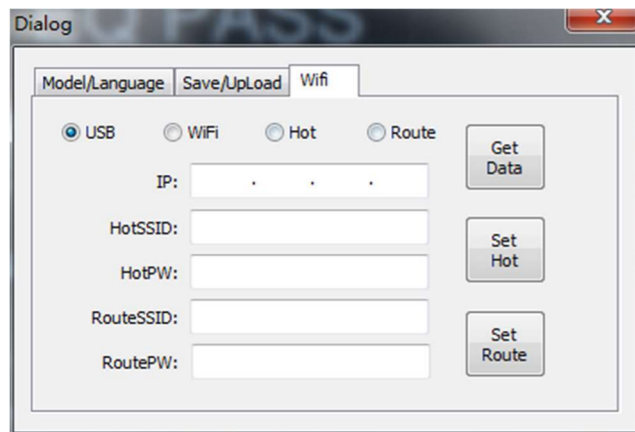


① Save mode to computer: Before saving mode to computer, the name of the naming mode in "Storage Mode Name" can save the mode to brain.

② Delete the mode saved by the computer: click "Find Mode in Computer" to find to delete the mode, click "Delete Mode Saved by Computer" and it is selected the pattern is deleted.

③ Upload the mode to the device: Click "Find Mode in Computer" to find the to transfer to the device (DSP) mode, click "Upload Mode to Device", the selected mode is uploaded to the device (DSP). To save to DSP please refer to "Pattern Save".

12.Wifi setting interface



This interface is reserved. The tuner adjusts each model, strives to obtain a satisfactory listening experience, optimizes the EQ curve and various parameters, and then uploads the packaged file to the server. The user can download the curve file of the corresponding car model from the server through the network and save it to the DSP. Thereby simplifying the tuning work and giving users a better experience.

13.Bluetooth audio input connection

This machine supports lossless music Bluetooth playback. After Bluetooth connection, as long as the Bluetooth connection or Bluetooth has signal transmission, the machine will automatically switch to the Bluetooth input channel. At the same time, if there is a telephone call, it is the highest priority to switch to the telephone conversation state.

How to connect your mobile phone to Bluetooth:

1. Turn on the Bluetooth switch of the phone in the phone settings. After opening, as long as the effective distance inside (10 meters) the phone will automatically scan to a device named "DSP AUDIO", this device is the Bluetooth name of the sound processor. If the player of your phone is playing music, it will automatically connect and play music.

2. If there is no Bluetooth connected. Click on the "DSP AUDIO" device under "Devices",after a while, "Connected" will be displayed, which means that the phone is connected to the sound effect.The Bluetooth of the organizer is gone. During the connection process, the sound proceclIf the phone does not play music, you can open the phone's player to play lossless music.

14.Simple fault analysis and elimination

Harness plug does not match original car.	The wiring harness is dedicated for special vehicles, please confirm your model and high .Low car model, and inform the local dealer or agent.
The product has noise during use.	Make sure that the host cable is properly connected and check for looseness. After the removal, there is still noise, please check whether the ground wire is connected with the original car CD player shell. If you still can't solve it, please return to local distributor or agent.
The working indicator light is not on and there is no sound.	Please check whether all the liner wires have been properly connected, and check whether the original car has its own power amplifier or modified power amplifier.
The original car host and the machine can not be powered.	Check whether the original vehicle power cord is connected and whether the ground wire is connected to the original vehicle main body casing to restore the original vehicle position.

15. Specifications	
Port	1 dedicated car interface; 1 optical fiber input interface; 8 RCA output interfaces; 6 RCA input interfaces.
input resistance	Low level: 20kΩ; high level: 240Ω
Low level output impedance	100Ω
Signal input and output range.	RCA input:3.3Vp-p; high impedance: 30Vp-p; RCA output: 10Vp-p.
Frequency response	20Hz-20kHz @±3dB
Total harmonic distortion	≤0.1%@Fre=1kHz, Po=5W
Signal to noise ratio	≥108dB
Isolation	≥96dB
Operating Voltage	DC12-14V

Port	1 dedicated car interface; 1 optical fiber input interface; 8 RCA output interfaces; 6 RCA input interfaces.
input resistance	Low level: 20kΩ; high level: 240Ω
Low level output impedance	100Ω
Signal input and output range.	RCA input:3.3Vp-p; high impedance: 30Vp-p; RCA output: 10Vp-p.
Frequency response	20Hz-20kHz @±3dB
Total harmonic distortion	≤0.1%@Fre=1kHz, Po=5W
Signal to noise ratio	≥108dB
Isolation	≥96dB
Operating Voltage	DC12-14V
Operating temperature	-40°C~ +105°C
Product temperature	<50°C
Product Size	224mm*128mm*32mm

Specifications are subject to change without prior notice.The Company reserves the right to change the products from time to time and has no obligation to adjust the products provided earlier accordingly.

Product warranty card

Product warranty description

The warranty service is only limited to the failure of the machine under normal use, Non-artificial damage caused by the quality of the product itself, with the invoice and warranty card, you will enjoy the following services in accordance with the three guarantees:

- 1.If there is a failure within one year from the date of purchase, you can enjoy free warranty service.
- 2.Please bring the warranty card and valid purchase invoice when repairing.
- 3.The warranty card shall be stamped with the official seal of the selling unit.
- 4.Replacement parts will not be returned to the user.
- 5.In case of any discrepancy between the contents of this card and the national regulations, the national regulations shall prevail.

A situation in which a warranty is not enforced

- 1.Failure to produce valid invoice and this card, or marks of alteration inconsistent with this product.
- 2.Failure to install and use the products according to the instructions.
- 3.Failure caused by collision, fall or lightning strike.
- 4.Losses caused by accidents, disasters, wars and other

After-sales service

If the user has problems in the use process, please contact the local dealer or agent with this card warranty, please keep it properly.

Warranty card

Product model	
Username	
Contact number	
Maketing unit	
Purchase date	